



EMS SQL Query

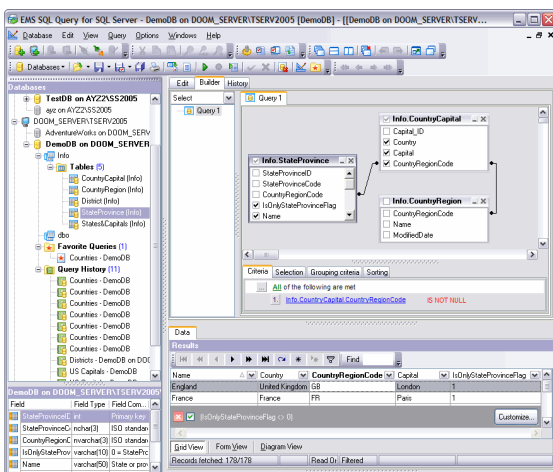
Powerful tool for advanced SQL query building

Description

Structured Query Language (SQL) is the leading language for querying relational databases today, and building effective SQL queries is an essential task in everyday practice of a DBA or database developer. Complex queries can affect a large number of database objects, include different criteria for selecting, sorting and grouping the required information, and use various SQL language constructions. The process of creating an effective SQL query requires a perfect knowledge of the chosen SQL dialect and a clear view of the database scheme and its constituent elements. In addition, considering a query execution plan is often useful in order to optimize the query execution time or tune data indexing parameters most precisely. One of the ways to solve all these tasks is to use a special SQL query building tool.

EMS SQL Query is a useful tool that lets you quickly and simply build and manage SQL queries. The program comes in separate editions for each of the most widely used DBMS servers (SQL Server, ORACLE, MySQL, PostgreSQL, InterBase/Firebird and DB2) and has all the necessary functionality you may need in your work with database queries.

Visual SQL query building and direct editing of a query text in the embedded multifunctional SQL Editor are only some features available in EMS SQL Query. User-friendly graphical interface allows you to connect to databases, select tables and fields for a query, set the selection criteria and much more. Using this query utility you can work with several queries at once, view the execution results in different modes, create queries with unions and subqueries visually, build diagrams based on queries, view query execution plans and use many other options.



Visual Query Builder for building queries visually

Key Advantages

Easy database and queries navigation

EMS SQL Query has user interface elements that facilitate the navigation within databases and your work with created queries. The combined tree view displays database structure and query list allowing you to navigate within database objects and work with SQL queries quickly and easily.

Visual query building and direct query text editing

When using EMS SQL Query, you have two basic tools for managing your SQL queries: Visual Query Builder and SQL Editor. The Visual Query Builder allows creating and editing SQL queries with few mouse clicks using drag-and-drop operations and can considerably reduce the query construction time. If you prefer to create queries in a text editor, you can use the built-in SQL Editor with syntax highlight, code completion and a number of other features.

Query plan viewing

With EMS SQL Query you can view the plan for each of the queries created and executed in the application. The program displays data retrieval methods used by the database server during query execution, which helps to analyze the performance issues of a query.

UNICODE support

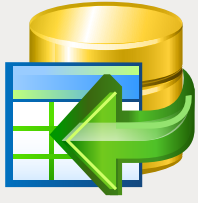
EMS SQL Query supports Unicode standard, which allows you to handle data represented in different languages and avoid any risks of damaging information; it offers consistency, stability, and interoperability of data, regardless of the source system, location, and platform.

Query history

EMS SQL Query stores the list of recently executed queries which includes query names and the execution dates as well as corresponding SQL texts of all queries. You can perform various operations on the selected query: activate, rename or delete the query, add the query to the Favorite Queries list, clear the history list and much more.

Query results handling

EMS SQL Query provides you with powerful tools for viewing, editing and printing data returned as a query result. The program allows you to view data as a grid or as a form, view BLOB fields content, represent data as diagrams of various types, as well as sort, group and filter the result record set.



EMS SQL Query (continued)

Powerful tool for advanced SQL query building

Country	CustNo	SaleDate	ShipDate	OrderNo	Company	City
Country: Cyprus						
Country: FI						
Country: Greece	2 315,000	12.11.1989 0:00:00	13.11.1989 0:00:00	1 045,000	Divers of Corfu,	Ayios
	2 315,000	14.06.1989 0:00:00	14.06.1989 0:00:00	1 039,000	Divers of Corfu,	Ayios
	2 315,000	13.02.1994 0:00:00	13.02.1994 0:00:00	1 146,000	Divers of Corfu,	Ayios
	2 315,000	14.05.1994 0:00:00	14.05.1994 0:00:00	1 198,000	Divers of Corfu,	Ayios
	2 315,000	09.01.1995 0:00:00	09.01.1995 0:00:00	1 298,000	Divers of Corfu,	Ayios
Country: Republic So. Africa						
Country: US	1 380,000	06.11.1994 0:00:00	07.11.1998 0:00:00	1 006,000	Blue Jack	Waipahu
	1 510,000	03.05.1988 0:00:00	04.05.1988 0:00:00	1 008,000	Ocean	Kailua-Kona
	1 560,000	18.05.1988 0:00:00	19.05.1988 0:00:00	1 011,000	The Depth	Marathon
	1 563,000	19.05.1988 0:00:00	20.05.1988 0:00:00	1 012,000	Blue Sports	Giribaldi
	1 624,000	25.05.1988 0:00:00	26.05.1988 0:00:00	1 013,000	Makai SCUBA	Kailua-Kona
	1 645,000	25.05.1988 0:00:00	26.05.1988 0:00:00	1 014,000	Action Club	Sarasota
	1 680,000	02.06.1988 0:00:00	03.06.1988 0:00:00	1 016,000	Island Finders	St Simons
	2 118,000	18.06.1988 0:00:00	19.06.1988 0:00:00	1 018,000	Blue Spats	Largo
	2 135,000	24.06.1988 0:00:00	25.06.1988 0:00:00	1 019,000	Frank's Divers	Eugene
	1 221,000	01.07.1988 0:00:00	02.07.1988 0:00:00	1 023,000	Kauai Dive	Kapaa

Viewing query execution results

Program features

- Program editions for the following DBMS: Oracle, Microsoft SQL Server, MySQL, PostgreSQL, InterBase/Firebird and DB2
- Using drag-and-drop operations when selecting tables and fields for a query visually
- The ability to create queries with unions and subqueries visually
- Possibility to view query plans
- History of recently used queries
- Working simultaneously with several queries in separate windows
- Tools for data grouping and filtering
- Syntax highlight, "quick code" and keyboard templates for faster editing of the query text
- Unicode support
- The ability to create diagrams based on queries
- Possibility to connect to the database via SSH tunnel (for specific DBMS)
- A variety of options for customizing query creation or editing process

System Requirements

- Microsoft® Windows XP, Microsoft® Windows 2003 Server, Microsoft® Windows Vista, Microsoft® Windows 2008 Server, Microsoft® Windows 7, Microsoft® Windows Server 2012, Microsoft® Windows Server 2012 R2, Microsoft® Windows 8/8.1, Microsoft® Windows 10
- 512 MB RAM or more; 1024 MB or more recommended
- 50MB of available HD space for program installation
- Corresponding system libraries or a native client to connect to the specific DBMS server

Contacts

EMS Database Management Solutions, Inc.

www.sqlmanager.net

sales@sqlmanager.net

Tel/Fax: 1-646-362-2260

Toll-free for U.S. & Canada: 1-866-SQL-4-YOU (1-866-775-4968)