

# EMS DB Extract

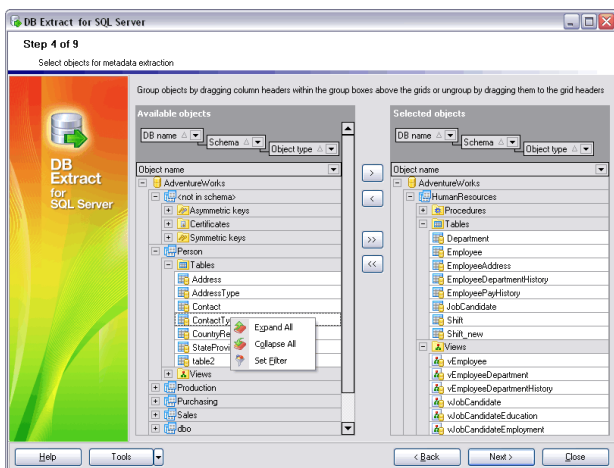
Helpful tool for creating database backups in the form of SQL scripts

## Description

Saving database structure and data to a SQL script file can be very useful for a variety of reasons. It can help in your data recovery efforts in case of a disaster because you can revert your existing database to the saved snapshot or restore individual database components and data if necessary. Moreover, during migration while switching from one version of a database or even database system to another, multi-versioning can be a handy feature and the possibility to keep multiple copies of the same database in the form of SQL scripts would be indispensable. Saved text files with SQL scripts describing the structure of the database will always help you to understand the changes made to a database as a whole or its individual elements. Thus, saving database structure in the form of SQL scripts can be very useful for database documenting and maintaining purposes, hence the presence of a utility capable of fulfilling this kind of task is imperative when speaking of DBA's tools arsenal.

EMS DB Extract is an impressive and easy-to-use tool for creating database backups in the form of SQL scripts. The program comes in separate editions for each of the most widely used DBMS servers (SQL Server, ORACLE, MySQL, PostgreSQL, InterBase/Firebird and DB2) and allows you to save metadata of all database objects as well as table data as database snapshots, so these program capabilities may be applied for migration processes or even may be considered as a solution for creating database backups.

EMS DB Extract enables you to select objects and data tables for extraction, transform table data to SQL scripts as INSERT statements, define constraints for extracted table data, compress result script files and more. The program scripts database objects in the correct order according to their dependencies, so that the subsequent recovery of objects from created script files also takes place in the right order



The utility enables you to select objects for extraction

## Key Advantages

### Working with multiple databases simultaneously

EMS DB Extract allows you to extract structure and data from several tables of different databases located at one host within one session.

### The ability to select database objects for extraction

With EMS DB Extract you can select databases and tables from which metadata and/or data are to be extracted, as well as define types of objects for metadata and data extraction.

### Possibility to extract database objects in the correct order according to their dependencies

EMS DB Extract scripts database objects according to their dependencies. This will ensure that the follow-up execution of the generated script will result in creation of the correct relationships and dependencies between database elements.

### UNICODE support

EMS DB Extract supports the Unicode standard, which allows you to extract data represented in different languages and avoid any risks of damaging information; it offers consistency, stability, and interoperability of data, regardless of the source system, location, and platform.

### Possibility to save all parameters specified within the current wizard session

EMS DB Extract allows you to store its configuration settings in external files if you need to perform the schema and data extraction process repeatedly.

### Unattended database data and structure extraction

Additionally to the GUI version which is implemented in the form of a wizard application, the installation package of EMS DB Extract includes the console version which can be run from Windows command line with a template file name used as an execution parameter. This command line tool is intended for the scheduled data extraction process.

### Wide variety of configuration parameters

EMS DB Extract provides full customization of the script generation process and program interface settings. You can limit the number of records to be extracted from each table, specify the filter for data extraction from each of the tables, set up compression options for the result script, control BLOB fields handling, define the block size for the commit operation and use many other settings. Also you can customize the program interface, windows behavior, program language and more.

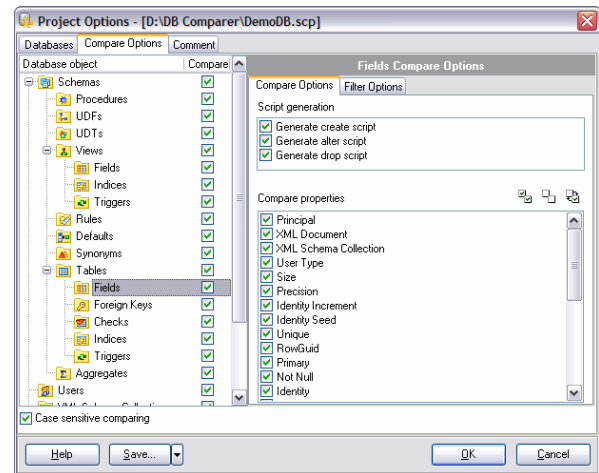


# EMS DB Extract (continued)

Helpful tool for creating database backups in the form of SQL scripts

## Program features

- Program editions for the following DBMS: Oracle, Microsoft SQL Server, MySQL, PostgreSQL, InterBase/Firebird and DB2
- Unicode support
- Extracting structure and data from several tables of different databases located at one host within one session
- Saving all parameters set on the current wizard session into a configuration file
- Possibility to connect to the database via SSH tunnel (for specific DBMS)
- Automation of the data extraction process with the help of the Console Application
- A variety of options for customizing the data extraction process
- Possibility to define constraints for extracted table data
- Possibility to insert statements for emptying tables before inserting extracted data
- Extracting table data to SQL scripts as INSERT statements
- Possibility to extract database objects in the correct order according to their dependencies
- Possibility to compress the result script and split it into volumes



Ability to select the tables from which data are to be extracted

## System Requirements

- Microsoft® Windows XP, Microsoft® Windows 2003 Server, Microsoft® Windows Vista, Microsoft® Windows 2008 Server, Microsoft® Windows 7, Microsoft® Windows Server 2012, Microsoft® Windows Server 2012 R2, Microsoft® Windows 8/8.1, Microsoft® Windows 10
- 512 MB RAM or more; 1024 MB or more recommended
- 50MB of available HD space for program installation
- Corresponding system libraries or a native client to connect to the specific DBMS server

## Contacts

EMS Database Management Solutions, Inc.

[www.sqlmanager.net](http://www.sqlmanager.net)

[sales@sqlmanager.net](mailto:sales@sqlmanager.net)

Tel/Fax: 1-646-362-2260

Toll-free for U.S. & Canada: 1-866-SQL-4-YOU (1-866-775-4968)