



EMS Data Generator

Impressive tool for generating test data to database tables

Description

When creating, modifying and testing database components or applications, it is critical to analyze their effectiveness for a wide variety of input data and operating conditions. Such a systematic examination helps identify design problems and check the robustness as well as quality of the proposed approach with regard to data processing. Evaluation and applicability of many database related techniques, ranging from access methods to optimization strategy and data mining scheme also crucially depend on their ability to work with different data sets in a robust way. But often obtaining the required information volume within a short time is a difficult problem which makes DBAs as well as database developers build their own ad-hoc data generators. However, writing test data generators or scripts is a time consuming and laborious process and can be very much out of the scope of the task at hand.

EMS Data Generator significantly reduces the time database administrators and developers spend on generating test databases. The program comes in separate editions for each of the most widely used DBMS servers (SQL Server, ORACLE, MySQL, PostgreSQL, InterBase/Firebird and DB2), it provides various data generation modes for each table field and ensures the control over referential data integrity for linked tables. EMS Data Generator automatically creates and fills database tables with data, but, if necessary, you can always save data generated by the program in the SQL script without executing queries on the database server. You can also edit the script directly in Data Generator before its execution.

EMS Data Generator allows you to define tables and fields for generating data, set value ranges, generate string fields by mask, load values for BLOB fields directly from files, set lists of values manually or select values from SQL queries and perform other operations with test data in a simple and direct way. The distribution package of the utility also includes the console application which allows you to generate data in one-touch by using data generation templates.

Key Advantages

Several ways to generate test data

EMS Data Generator provides the ability to set data generation mode for each table field - random data generation, incremented values generation, getting data from a list or SQL query, as well as getting data from the specified list of files or from an existing table field. When working with lists of values and file lists, you can specify whether the values or files are to be taken in the random order or in the order they have been inputted. The set of available modes depends on the type of field selected for data generation.

Editing and saving data generation script to a file for future use

You can edit and save test data generated by EMS Data Generator in the form of SQL scripts. For your convenience there is the script editor that supports the code folding, syntax highlight and a number of other features for efficient SQL editing.

UNICODE support

EMS Data Generator supports Unicode standard, which allows you to generate test data represented in different languages and avoid any risks of damaging information; it offers consistency, stability, and interoperability of data, regardless of the source system, location, and platform.

Unattended test data generation

Alongside the GUI version which is implemented in the form of a wizard application, the installation package of EMS Data Generator includes the console version which can be run from the Windows command line with a template file name used as an execution parameter. This command line tool is intended for the scheduled test data generation.

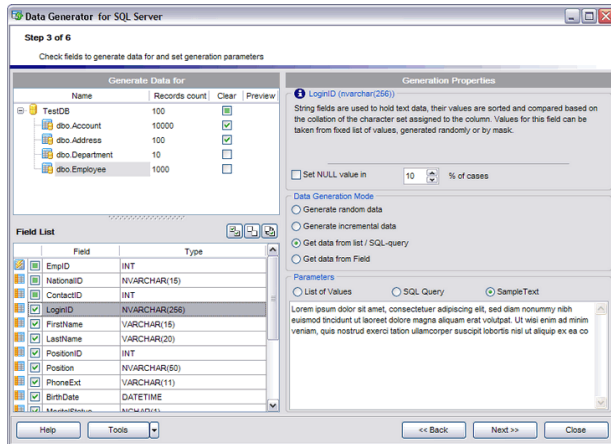
Wide variety of configuration parameters

EMS Data Generator provides full customization of the test data generation process and program interface settings. You can set the quantity of records to be generated by default, enable/disable the option to empty tables before data generation, define default constraints for all supported data types, specify the percentage of records that will remain NULL by default. Also you can customize the program interface, windows behavior, program language and more.



EMS Data Generator (continued)

Impressive tool for generating test data to database tables



Wide variety of generation parameters for each field type

System Requirements

- Microsoft® Windows XP, Microsoft® Windows 2003 Server, Microsoft® Windows Vista, Microsoft® Windows 2008 Server, Microsoft® Windows 7, Microsoft® Windows Server 2012, Microsoft® Windows Server 2012 R2, Microsoft® Windows 8/8.1, Microsoft® Windows 10
- 512 MB RAM or more; 1024 MB or more recommended
- 50MB of available HD space for program installation
- Corresponding system libraries or a native client to connect to the specific DBMS server

Program features

- Program editions for the following DBMS: Oracle, Microsoft SQL Server, MySQL, PostgreSQL, InterBase/Firebird and DB2
- Unicode support
- Generating data to several tables from different databases on one host
- Different generation types for each field including list, random and incremental generation, generation into two and more fields simultaneously
- Possibility to use SQL query results as a list of values for data generation
- Ability to preview the generated data
- Automatic control over referential integrity for linked tables
- Possibility to save all generation parameters set on the current wizard session into a configuration file
- Connection to the database via SSH tunnel (for specific DBMS)
- Automatic test data generation with the help of the Console Application
- A variety of options for customizing the data generation process

Contacts

EMS Database Management Solutions, Inc.

www.sqlmanager.net

sales@sqlmanager.net

Tel/Fax: 1-646-362-2260

Toll-free for U.S. & Canada: 1-866-SQL-4-YOU (1-866-775-4968)