



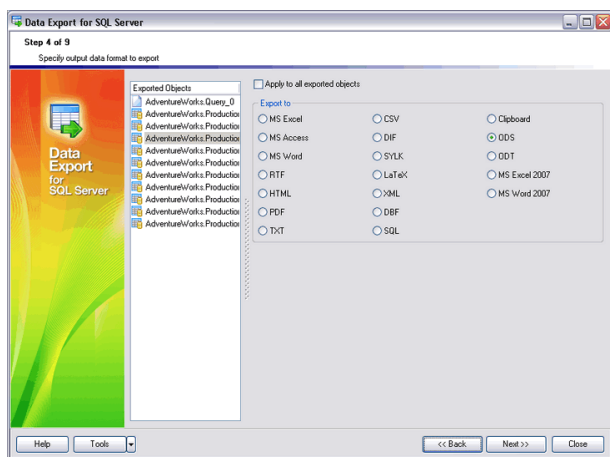
EMS Data Export

The most efficient way to export data from database tables to popular file formats

Description

Data export is a separate and important task in the daily work of database administrators, application developers and ordinary users, since database servers do not exist in an isolated world and the need for information exchange occurs periodically. The data export process can serve a number of significant functions from exchanging data between different database systems to unloading information for seamless integration of various information infrastructures. Accordingly there is an urgent need for an effective and flexible tool for rapid data exporting to various popular file formats, such as Excel datasheet, Access database, CSV or plain text file, Word document, XML file and others.

EMS Data Export is a helpful database utility intended for the quick export of data from database tables to any of a great number of available file formats. The program comes in separate editions for each of the most widely used DBMS servers (SQL Server, ORACLE, MySQL, PostgreSQL, InterBase/Firebird, DB2) and is capable of exporting data from several database tables, views or queries at the same time. EMS Data Export has an intuitive and flexible wizard driven user interface that guides you through the data export process step by step and allows you to set a wide number of adjustable parameters for each exported database table. So you just simply select the source database table or SQL query, specify the target file format, change some export settings, if necessary, and the program creates files in the required format with the required content derived from the database tables data.



Export data to a wide list of available file formats

Key Advantages

Export data from databases to a wide list of available formats

EMS Data Export allows you to export database data to a wide range of output file formats. As a result, the typical task of the direct export of database data to, for example the Access, Excel or CSV files can be solved very simply and quickly.

Exporting data from several tables, views or queries at the same time

EMS Data Export supports export of data from one or several tables or views located in the same or different databases and allows you to set parameters for each exported data source and configure specific parameters for each output file format. Additionally you can create SQL queries if necessary, the results of which will also be exported.

UNICODE support

EMS Data Export supports Unicode standard, which allows you to export data stored in different languages and avoid any risks of damaging information; it offers consistency, stability, and interoperability of data, regardless of the source system, location, and platform.

Intuitive user-friendly wizard interface

The tool has a user-friendly wizard interface that allows you to visually set export options, such as destination file type and its name, exported table fields and their order, data formats, and many others. All parameters can be saved in a configuration file and used in future both in the GUI version of the utility and in the console one.

Console version to automate the export process

EMS Data Export installation package contains a special command-line utility that can perform the export process according to the time schedule and using the previously saved configuration. This makes it easy to automate the task of periodic information export from DBMS to data files.

Exporting data in the form of SQL scripts

EMS Data Export provides the ability to export data in the form of an SQL script, and what is more, you can define the type of DBMS you need to export data to in order to achieve the highest possible compatibility. This feature allows you to use the program for data transitions between different database management systems.



EMS Data Export (continued)

The most efficient way to export data from database tables to popular file formats

Program features

Program editions for the following DBMS: Oracle, Microsoft SQL Server, MySQL, PostgreSQL, InterBase/Firebird and DB2

Exporting data to 19 most popular formats: MS Excel, MS Access, MS Word, RTF, HTML, PDF, XML, TXT, DBF, CSV, ODF, SYLK, DIF, LaTeX, SQL, Clipboard and others

User-friendly localizable wizard interface

Adjustable parameters for each exported table and specific parameters for each output format

Exporting data from several tables, views or queries at the same time

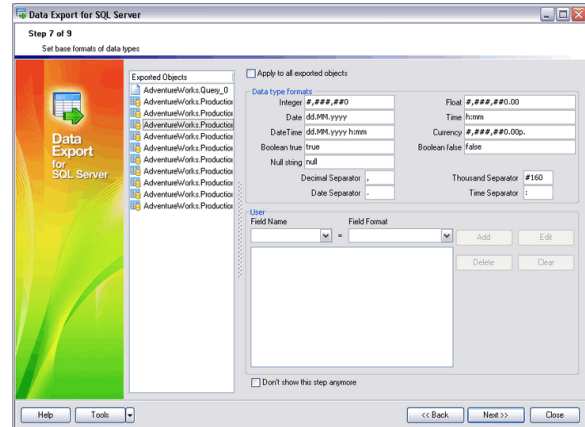
UNICODE support

Possibility to save all export parameters set on the current wizard session to the configuration file

Secure Shell (SSH) and HTTP tunneling support (for certain DBMS)

Command-line utility to automate the export jobs using the configuration file

A great number of customizable settings that allow performing the export from databases with maximum flexibility



Possibility to define different options for each exported object separately

System Requirements

- Microsoft® Windows XP, Microsoft® Windows 2003 Server, Microsoft® Windows Vista, Microsoft® Windows 2008 Server, Microsoft® Windows 7, Microsoft® Windows Server 2012, Microsoft® Windows Server 2012 R2, Microsoft® Windows 8/8.1, Microsoft® Windows 10
- 512 MB RAM or more; 1024 MB or more recommended
- 50MB of available HD space for program installation
- Corresponding system libraries or a native client to connect to the specific DBMS server

Contacts

EMS Database Management Solutions, Inc.

www.sqlmanager.net

sales@sqlmanager.net

Tel/Fax: 1-646-362-2260

Toll-free for U.S. & Canada: 1-866-SQL-4-YOU (1-866-775-4968)