



# EMS SQL Manager for SQL Server

Become more productive than ever before!

## TOP FEATURES

- ▶ Effective management tool for SQL Server databases and all database objects
- ▶ Visual Database Designer
- ▶ Flexible interface for viewing, editing and printing data with Unicode support
- ▶ Ability to create and run queries with advanced visual constructor or professional SQL text editor
- ▶ Impressive data export and import capabilities. Support of most popular file formats
- ▶ Database snapshot creation in form of SQL scripts
- ▶ Effective security management
- ▶ Report designer with clear in use report construction wizard
- ▶ FREEWARE version
- ▶ Free One Year of Maintenance already included!

## OVERVIEW

Modern database management systems built on SQL technology are the foundation for company's data warehouse environment and play an important role in day-to-day business operations. Such environments need a solution that simplifies management process and increases database administrator productivity. Although organizations can install and use the DBMS as delivered, often the functionality needed to adequately support database development and maintenance is not provided

by the DBMS product alone. Concepts of database management maintain the focus on real-world cases such as database design, data integrity, concurrent updates, data security and many other issues. With the help of the appropriate database tools a DB developer can reduce errors, speed up the complex work of analyzing, designing and implementing database applications. Specialized DBA tools will help reduce the costs associated with implementing efficient database administration.

## KEY FEATURES

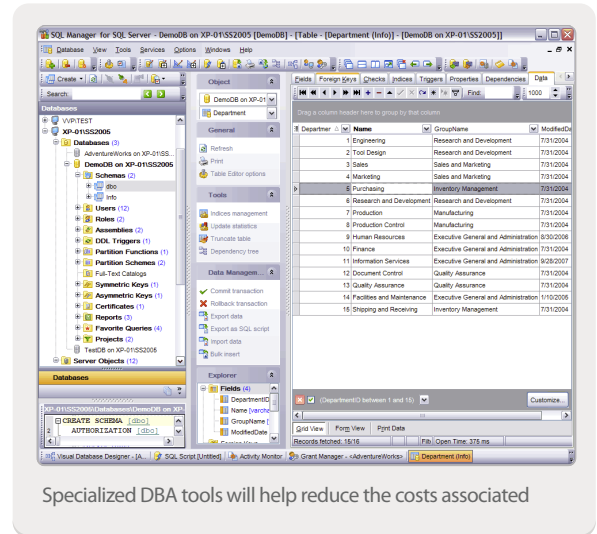
SQL Manager works with all SQL Server versions from 2000 to 2014 and supports all of the latest SQL Server innovations. It provides you with an ability to contribute to efficient SQL Server administration and development using a variety of available tools. You can work with different databases and SQL servers simultaneously on multiple connections to ensure effective data processing. The program has an easy-to-use graphical interface and a lot of features for database maintenance and administration operations.

### EASY MANAGEMENT OF SQL SERVER OBJECTS AND SERVICES

In a modern company, SQL servers can have a large number of services and corresponding objects, such as databases, security realms, DDL triggers, CLR components, data maintenance plans, server activity and configuration information, full-text search objects and many others. With the help of SQL Manager you can easily manage most of SQL Server objects and native services. You can manipulate databases and schemas, tables and all their subobjects, data integrity, events and performance related objects, control automated administrative tasks and their properties, get information about users' activity; view/change server configuration, handle data conversion transformations and snapshots, work with data backups and much more.

### ADVANCED DATA MANIPULATION TOOLS

One of the prime features of SQL Manager is the possibility to view, search and edit the database content visually so you can retrieve the most relevant data. The program provides powerful capabilities for examining and modifying database content: BLOB viewer/editor with several modes of viewing BLOB data, plenty of useful tools such as data grouping, summarizing, fast searching and filtering, master-detail view to work with two linked tables at the same time, table and card data views, ability to copy and paste selected records, to duplicate any database member, advanced printing system and many other useful features.



Specialized DBA tools will help reduce the costs associated



# EMS SQL Manager for SQL Server

continues

Become more productive than ever before!

## SYSTEM REQUIREMENTS

### HARDWARE

- ▶ 512 MB RAM or more; 1024 MB or more recommended
- ▶ 200 MB of available HD space for program installation

### SOFTWARE

- ▶ Microsoft Windows XP
- ▶ Microsoft Windows Vista
- ▶ Microsoft Windows Server 2008
- ▶ Microsoft Windows 7
- ▶ Microsoft Windows 8/8.1
- ▶ Microsoft Windows Server 2012
- ▶ Microsoft Windows 10
- ▶ Microsoft Windows Server 2016
- ▶ Microsoft Data Access Components (MDAC) or SQL Server Native Client

### SUPPORTED MICROSOFT SQL SERVER VERSIONS

- ▶ SQL Server 2000
- ▶ SQL Server Desktop Engine (MSDE) 2000
- ▶ SQL Server 2005
- ▶ SQL Server 2008
- ▶ SQL Server 2012
- ▶ SQL Server 2014
- ▶ SQL Server 2016
- ▶ Support for all SQL Server editions except Compact Edition
- ▶ Azure SQL Database/SQL Server

## EFFECTIVE SECURITY MANAGEMENT

SQL Manager works with Database Engine security objects and helps you protect data from unauthorized disclosure and tampering. The program includes Login Manager that allows browsing the list of SQL Server roles and defining login membership for each of the roles, and Grant Manager to set the user access grants for certain database objects. Also, the object editor has the Permissions tab, making it possible to grant privileges on objects to users and groups.

## EXCELLENT VISUAL AND TEXT TOOLS FOR QUERY BUILDING

SQL Manager provides several tools you may need to manage your SQL queries. The tools allow you to create and edit the SQL text of a query, prepare and execute queries and view the results of query execution. SQL text Editor supports code completion and formatting, syntax highlight and code folding. Visual Query Builder can be used for building complicated queries visually without deep knowledge of SQL syntax. You can view the diagram execution plan for each of the queries created and executed in the application.

## IMPRESSIVE DATA EXPORT AND IMPORT ABILITIES

SQL Manager has the ability to import and export data to/from SQL Server database. The program allows to easily export and import data to and from most popular file formats like MS Excel, MS Access, DBF, XML, ODF, TXT, CSV, etc. In addition, you can export data to SQL script as a number of INSERT statements or use BULK INSERT operation to load a data file into a database table / view in a user-specified format. Import/export settings can be saved as a template at any time for future use.

## EASY-TO-USE WIZARDS PERFORMING SQL SERVER ADMINISTRATIVE TASKS

Most administrative functions consist of repetitive sequences of tasks. With SQL Manager you can perform these tasks quickly and easily with friendly wizards, such as Backup and Restore Database Wizards, Attach and Detach Database Wizards, and Shrink Database Wizard. Wizards will also help you to manage indices, update statistics, check database and much more.

## VISUAL DATABASE DESIGNER TO HANDLE DATABASE STRUCTURE IN A FEW CLICKS

Visual Database Designer is a handy tool that allows you to build database structure visually to represent the content of your database and its objects. Here is a short list of Visual Database Designer features: database diagram creation using the Reverse engineering tool; dividing diagram into different subject areas located on separate pages; creating/editing/dropping tables and table fields and links between them; saving as image or printing database diagram and a lot of visual customization options.

## MAINTENANCE INCLUDED

Software maintenance is a cost-effective and comprehensive service that includes technical support, software updates, and many other benefits. Within software maintenance service, you automatically receive the newest versions of EMS software upon their release at no additional cost. This allows you and your company to keep up with the latest software technology developments, take advantages of usability improvements, and manage software licenses more easily. SQL Manager already includes one year of Maintenance for free!

## ABOUT EMS

EMS /Electronic Microsystems/ is an Information Technology Company with software development as one of its activity fields. As an innovative, customer-focused company and the developer of leading database administration tools, EMS is the choice of thousands of companies in more than 90 countries. EMS customers include companies of all sizes from vast development teams in the world's largest organizations to progressive one-person shops. We strive to deliver exceptional quality and value to our clients, helping them to succeed in their development initiatives.

## ADDITIONAL INFORMATION

For more information about EMS SQL Manager for SQL Server, visit <http://www.sqlmanager.net/products/mssql/manager>

**SQL Manager.net**<sup>™</sup>  
EMS® Database Management Solutions

**EMS Database Management  
Solutions, Inc.**

Tel/Fax: 1-646-362-2260

Toll-free for U.S. & Canada:

1-866-SQL-4-YOU  
(1-866-775-4968)

web: [www.sqlmanager.net](http://www.sqlmanager.net)

e-mail: [sales@sqlmanager.net](mailto:sales@sqlmanager.net)